



# COMEX TRENDS 2022

Process

LISETH CERVANTES GÓMEZ  
INDUSTRIAL DESIGNER  
JUNE, 2022

STAGE 1

# CUTTING & SANDING

A pine wood board was purchased, in standard size (30 cm wide and 2.40 m long). Cutting slats of 1.80 and the base of the design, a square of 30 cm x 30 cm.





STAGE 2

# PAINTING

Once the parts were sanded, the necessary parts were coated with resin, and then the colors from the comex trends 2022 flavor color palette were applied.



STAGE 3

# ELECTRICAL INSTALLATION

Installation  
of the wiring inside the pole,  
as well as the LED light fixtures  
in each of the assembled birds.

For the electrical components,  
a socket with its respective connector  
per assembled birdie, plastic plugs  
for each of the joints (positive and  
negative poles), a main cable along  
the pole and an end plug for the wall  
were used.



→ 13 A

FILM NEGATIVE

→ 14

→ 14 A

FILM NEGATIVE

→ 13

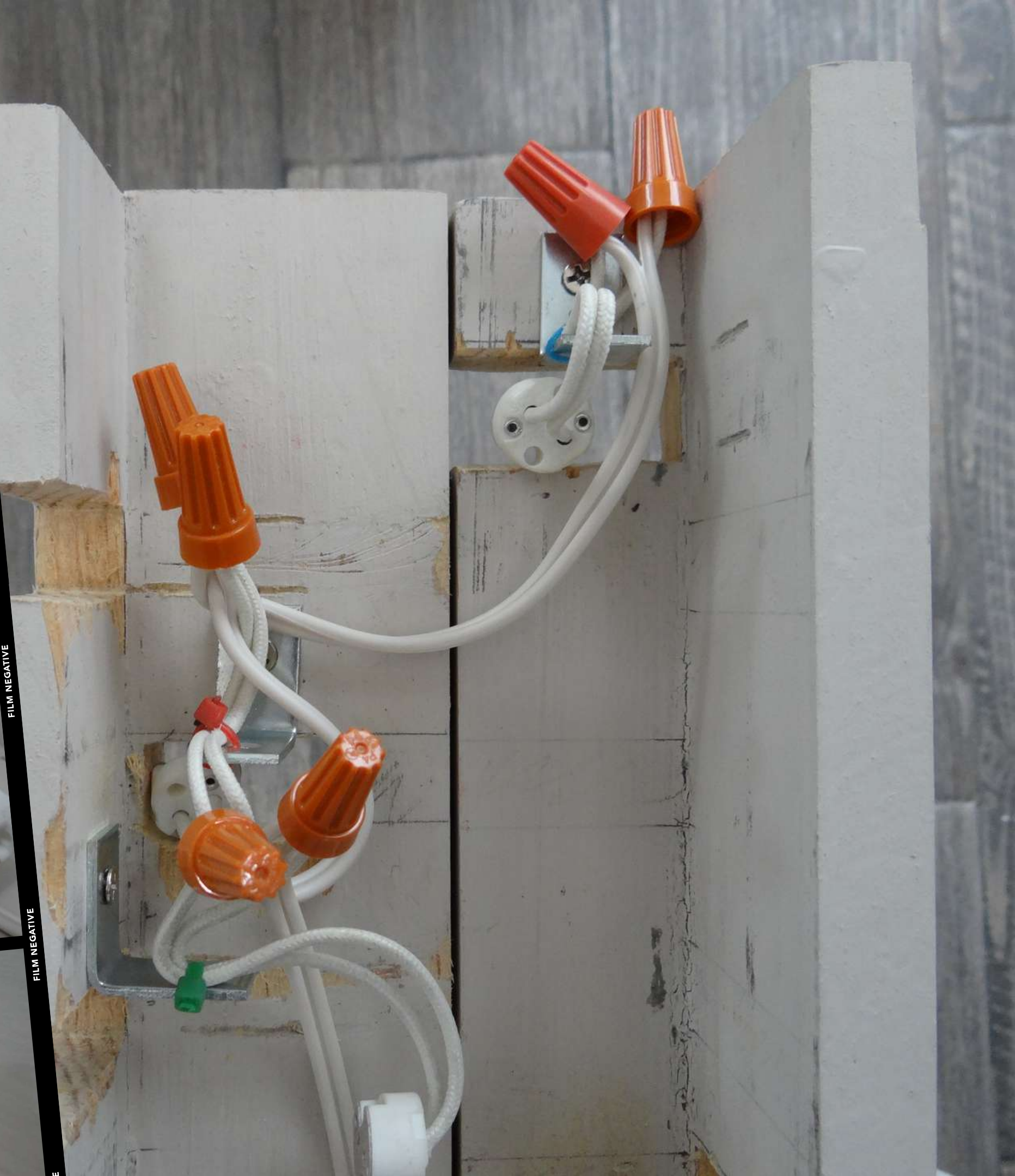
FILM NEGATIVE

→ 13 A

FILM NEGATIVE

→ 14

FILM NEGATIVE

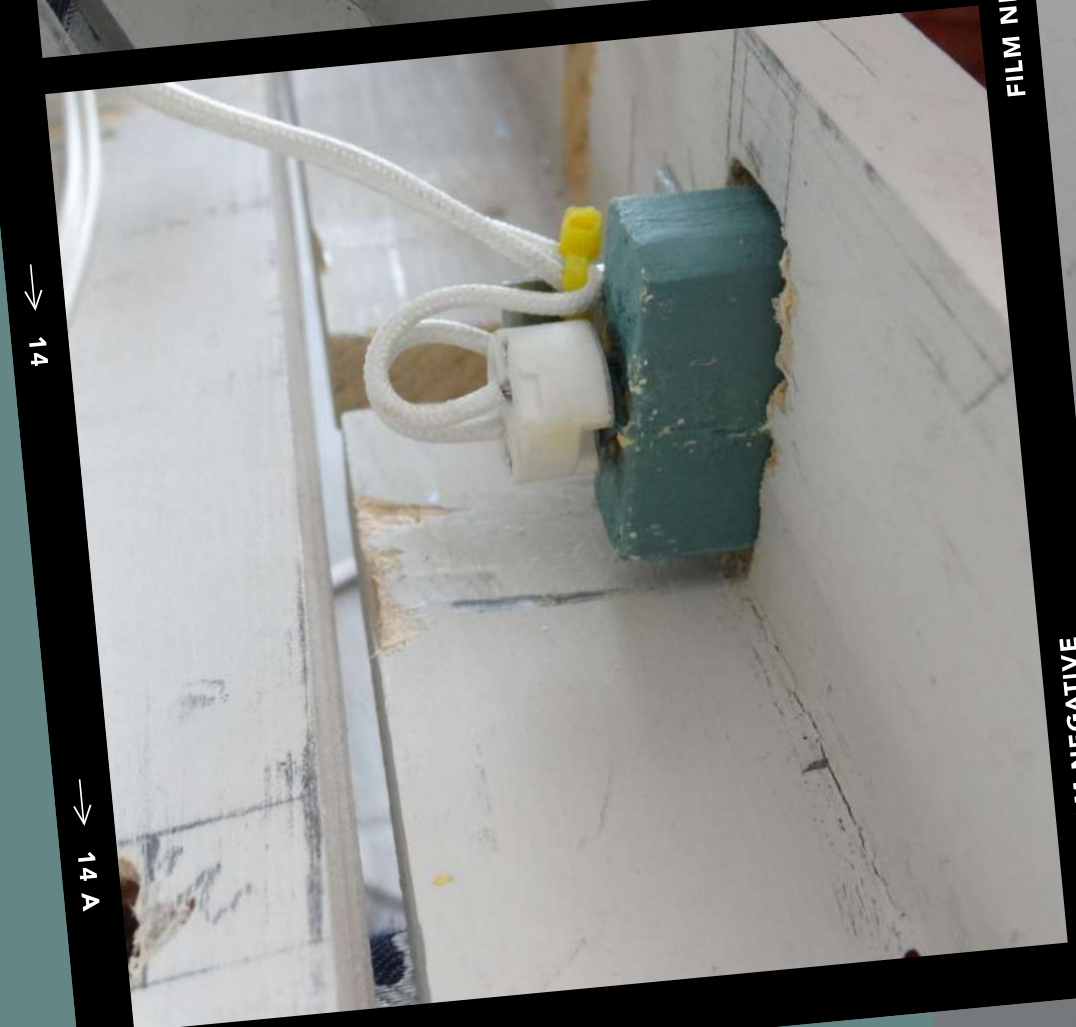


# 4

STAGE 4

## TESTING

Assembly of the pole with the base & the 4 birds





STAGE 5

# INSTALLATION

Set in the real  
scenario and  
test of use

# Final Result



# Comex Products



- 1 ME-70® COLOR ROIBO 1L  
VINYL PAINT
- 2 ME-70® COLOR TANGERINA 1L  
VINYL PAINT
- 3 ME-70® COLOR CERBATANA 1L  
VINYL PAINT
- 4 ME-70® COLOR POZOLE 1L  
VINYL PAINT
- 5 ME-70® COLOR CLARET 1L  
VINYL PAINT
- 6 ME-70® COLOR PERLA NEGRA 1L  
VINYL PAINT

- 7 ME-70® COLOR BOSCOLO 1L  
VINYL PAINT
- 8 ME-70® COLOR FLOR DE LOTO 1L  
VINYL PAINT
- 9 POLYFORM WOOD STAIN
- 10 THIN BRUSH CAMEL HAIR
- 11 WIDE BRUSH SYNTHETIC HAIR
- 12 TWO PAINT ROLLERS
- 13 WHITE GLUE 250 GR COMEX
- 14 SANDPAPER: 400, 200 & 100



Thank you

